

# SPECIFICATIONS

Model	AC output power	Phases	AC Voltage	Welding current	Engine HP required
Power-Tek	3 kW	1 or 3	115V/230V/380V	Not Appl	11 HP
Power-Tek	4 kW	1 or 3	115V/230V/380V	Not Appl	14 HP
Power-Tek	6 kW	1 or 3	115V/230V/380V	Not Appl	18 HP
Power-Tek	8 kW	1 or 3	115V/230V/380V	Not Appl	22HP
Power-Tek-W	2 kW	1 or 3	115V/230V/380V	175A DC	11 HP
Power-Tek-W	3 kW	1 or 3	115V/230V/380V	225A DC	14 HP
Power-Tek-W	5 kW	1 or 3	115V/230V/380V	325A DC	18 HP
Power-Tek-W	7 kW	1 or 3	115V/230V/380V	325 A DC	22HP

## OTHER RELATED POWER ELECTRONICS PRODUCTS.

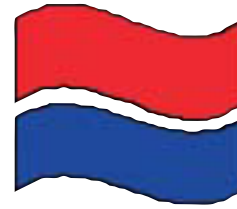
- Unipower** Multifunction – Vehicle mount, Welder/Generator/Boost –Charger/Heavy Duty Alternator, Available in 3kW, AC 230V, and DC welding up to 225A DC
- Power- 3 Phase** 3 Phase Generator Only units A range of PWM generators powered by dedicated alternators from 2-8kW. Available in 110, 220 and 380V models
- Power-Charge** A range of high charge alternators and regulators from 100-250A. Available in 12 and 24V versions
- Power-Moto** A range of Battery Management Systems for equalization of charge for dual or multiple batteries
- Power-Vert** A range of Inverters with Sine wave or Modified Sinewave outputs
- Power-Solar** A Range of Photovoltaic components, Panels & regulators

DEALER STAMP

## WARRANTY

12 Month replacement warranty on all parts. Any parts which prove to defective within 12 months from date of purchase, will be replaced (Ex factory) FREE OF CHARGE

This warranty is subject to the terms and conditions detailed in the operation and installation manual of this product.



# POWER-TEK

THE TRUE SINEWAVE VEHICLE-MOUNTED GENERATOR UNIT



THE BETTER SOLUTION TO YOUR MOBILE POWER PROBLEMS

- LIGHTWEIGHT
- COMPACT
- QUIET
- VERSATILE

AC output power centre tapped to earth

Another product from: **Power Electronics (Pty)Ltd**



[www.powerelectronics.biz](http://www.powerelectronics.biz)

# APPLICATIONS

Service vehicle



Fire engine



Lift



Motor home



- ▶ Emergency vehicles
- ▶ Fire trucks
- ▶ Ambulances
- ▶ Air compressors
- ▶ Scissor lifts
- ▶ Generators
- ▶ Telescopic lifts
- ▶ Mobile homes
- ▶ Defence vehicles
- ▶ Building equipment
- ▶ Luxury buses
- ▶ Refrigeration trucks
- ▶ Cooler containers
- ▶ Liquid transportation
- ▶ Patrol boats
- ▶ Sailing boats
- ▶ Tool Vans
- ▶ Hazmat Vehicles
- ▶ Trawlers
- ▶ Railway Maintenance units
- ▶ Earthmoving equipment
- ▶ Motor Boats
- ▶ Food Vans
- ▶ Pipe-layers
- ▶ Service vehicles
- ▶ Mobile Training Vehicles
- ▶ Mobile Displays
- ▶ Mobile Clinics
- ▶ Mobile Cash Payment vehicles

Further applications such as:  
 Tool Vans, Hazmat Vehicles, Trawlers;  
 Railway Maintenance units; Earthmoving  
 equipment; Motor Boats; Food Vans; Pipe-  
 layers; Service vehicles; Mobile Training  
 Vehicles; Mobile Displays; Mobile Clinics;  
 Mobile Cash Payment vehicles;

# ADVANTAGES OF EMPLOYING THE POWER-TEK SYSTEM

## FEATURES:

- ▶ Takes up less space
- ▶ Weighs much less
- ▶ Employs same fuel as Host Vehicle
- ▶ Quieter to operate
- ▶ Can be "tuned" to suit various applications
- ▶ Can be operated by a remote controller
- ▶ Can be used while the vehicle is in motion
- ▶ Easier to install
- ▶ More Versatile
- ▶ Output power-true Sinewave
- ▶ Output frequency independent of vehicle RPM
- ▶ Microprocessor driven
- ▶ Self diagnostic system software
- ▶ CE and TUV approved
- ▶ No exhaust ducting required
- ▶ Healthier interior working environment

## OPTIONS:

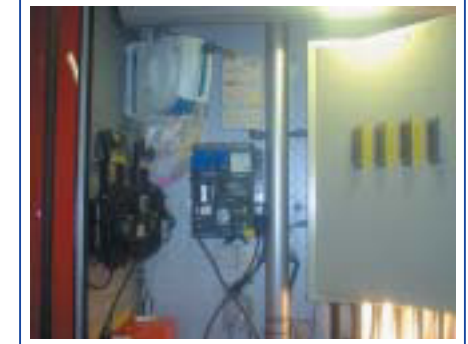
- ▶ Also available in Single or 3 Phase Voltage
- ▶ Frequency Factory set to 50Hz or 60Hz
- ▶ Voltages available — 115V, 230V and 380V
- ▶ Available in Special Marine model
- ▶ Supplied with optional Power distribution box

## RATINGS:

- ▶ Available from 3-8 KW



Installation on sky-lift



Installation in a firetruck



Vehicle lift

Power-Tek systems can be installed on 12V or 24V, Petrol or Diesel vehicle systems

Power-Tek is tailored to suit market requirements

Power-Tek is distributed by a network of international dealers, each trained to offer technical support